



# **Cambodia**

## **Country Report of Geospatial and Statistical Information**

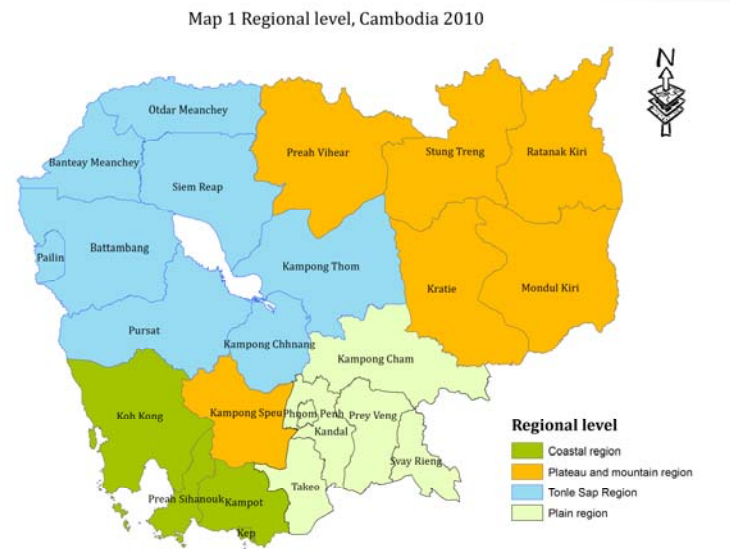
**United Nations Committee of Experts on Global  
Geospatial Information Management, New York  
6-8 August 2014**

# World Map



# Introduction

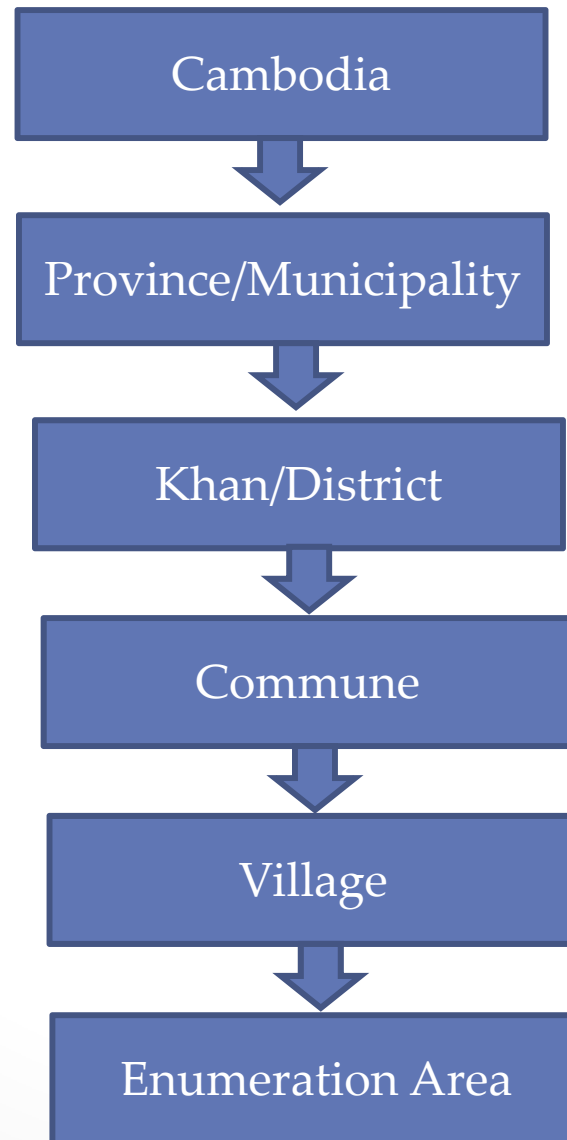
- Cambodia: officially known as the Kingdom of Cambodia and once known as the Khmer Empire, is a country located Southeast Asia.
- Its total landmass is 181,035 square kilometres with the population 14,676,591
- Bordered by Thailand to the northwest, Laos to the northeast, Vietnam to the east, and the Gulf of Thailand to the southwest.
- 4 regions
- 24 Provinces/City
- 363 Khans/Districts
- 1,429 communes
- 14,119 villages



# Role and responsibility of the NIS

- The National Institute of Statistics (NIS), which is part of the Ministry of Planning, is the focal point on statistical matters in Cambodia.
- The NIS compiles and consolidates statistics provided by decentralized offices and also collects primary data through household and establishment surveys and population, agricultural and economic censuses.
- The NIS also disseminate the data through publication and workshop. Data dissemination is also done using maps. Ex. Census atlas, poverty map etc..

# Hierarchy level

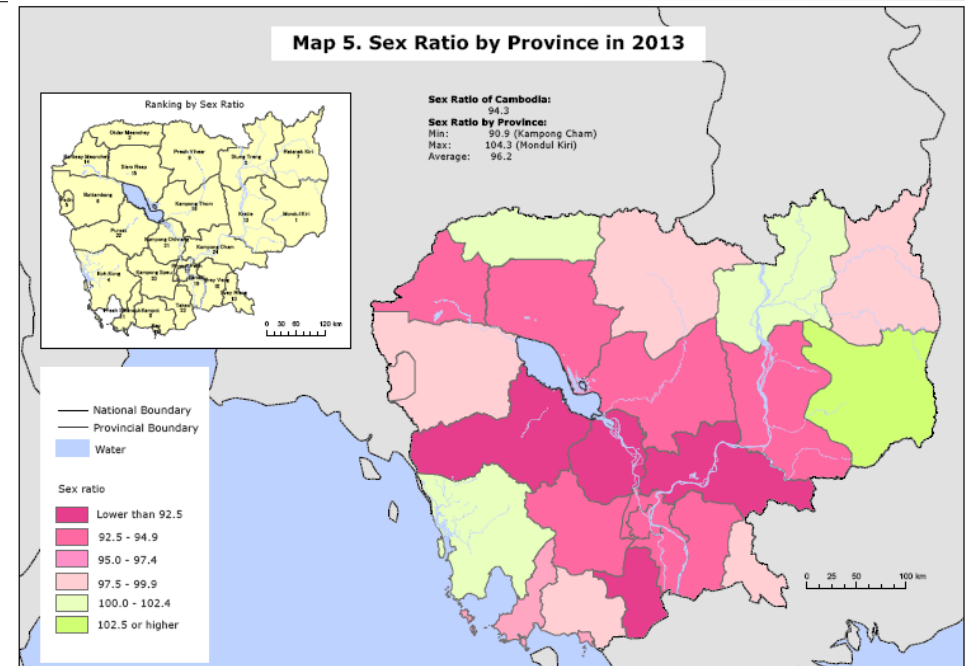
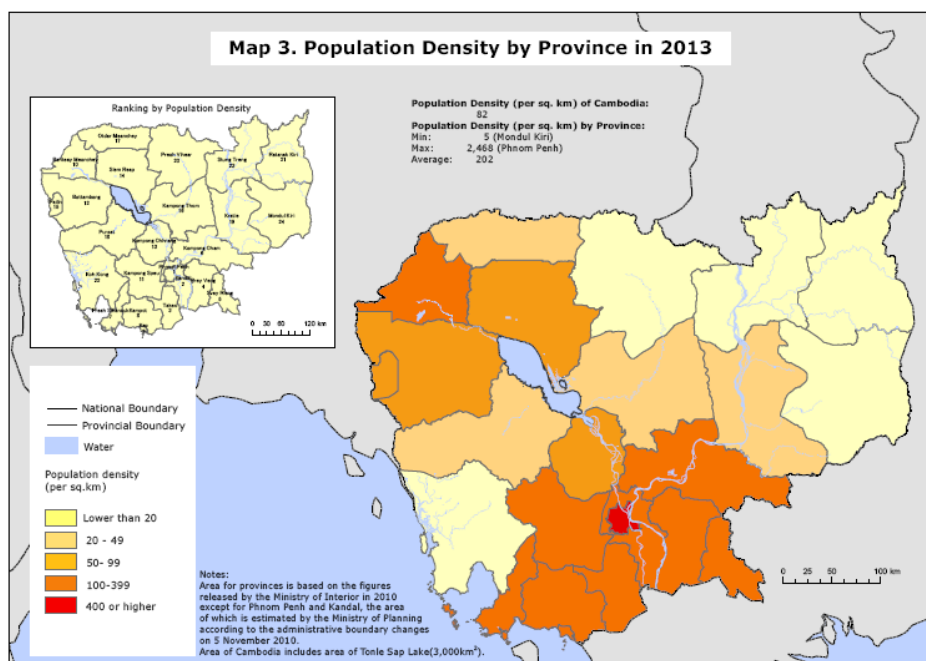


# NIS - JICA

- 2005-2014 with support from Japan International Cooperation Agency (JICA)
- Project on the Improvement Official Statistics in Cambodia Phase I and II.
- Project purpose
  - Strengthening the statistical capacity of the NIS staff, provincial statistical staff, and the statistical staff of main line ministries
  - Developed the digital map using Arc GIS software (Population Census 2008) to Enumeration Area level (EAs)
  - Training on small area statistics to the national level and sub-national using Arc GIS software.

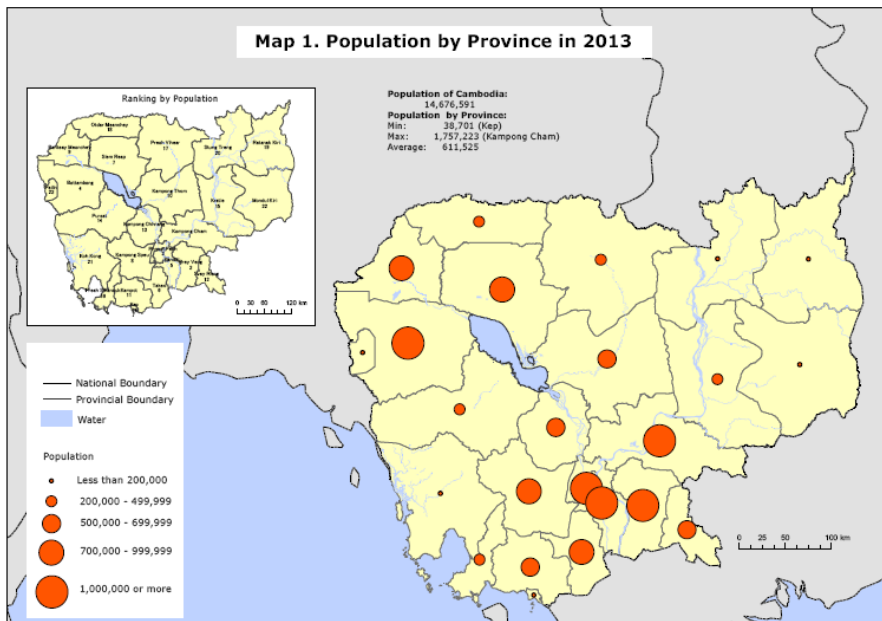
# Example of using geo-spatial and information system

Using Inter-Censal Population Survey 2014, we can produce many maps.

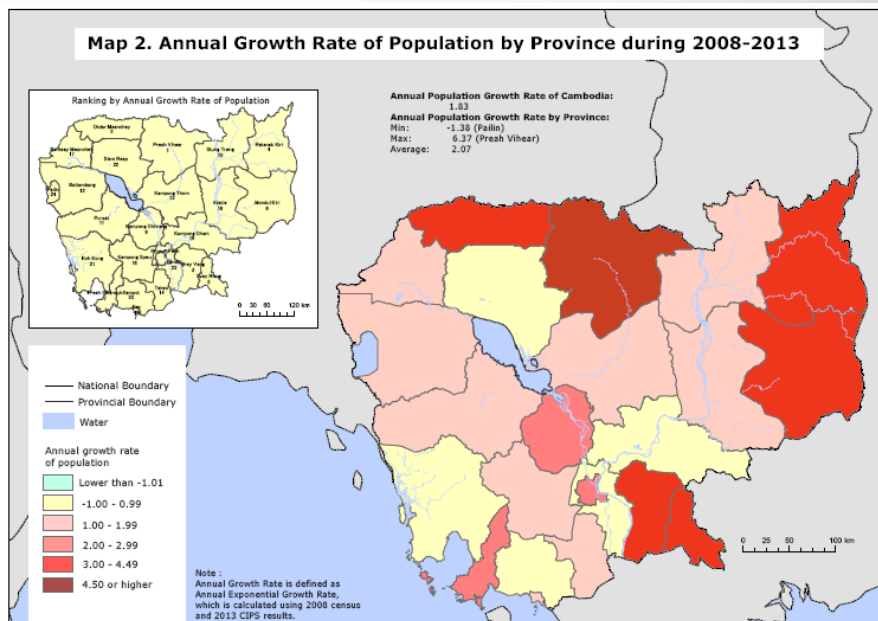




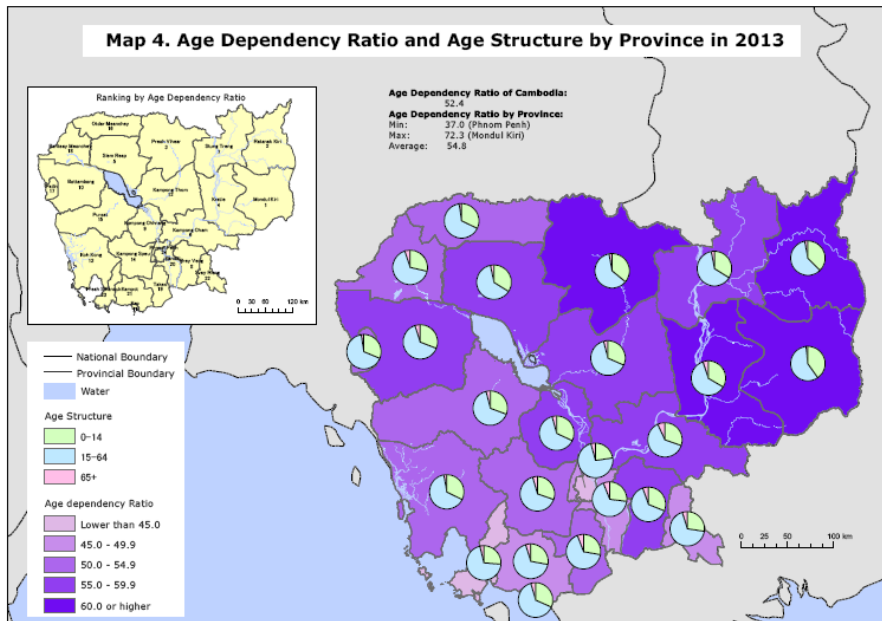
**Map 1. Population by Province in 2013**



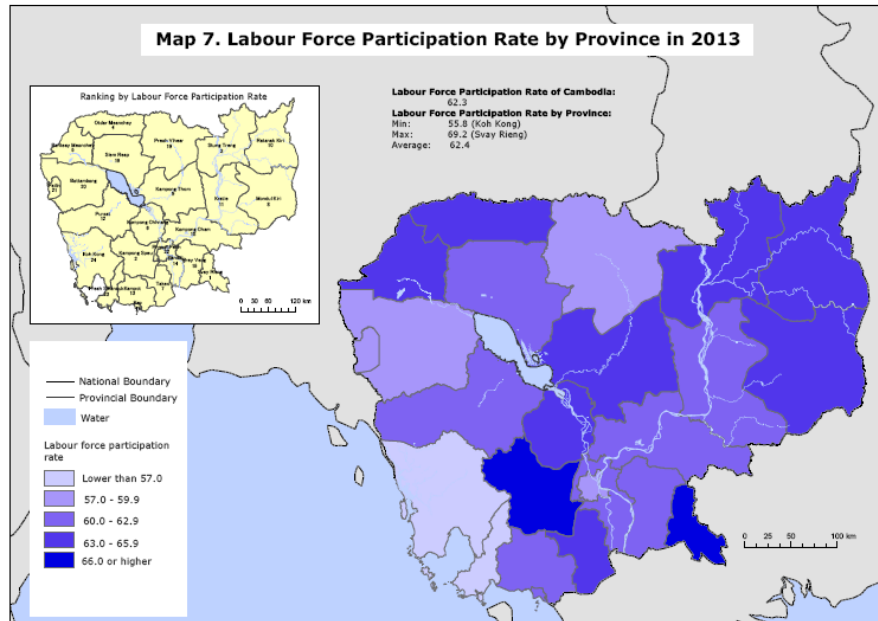
**Map 2. Annual Growth Rate of Population by Province during 2008-2013**



**Map 4. Age Dependency Ratio and Age Structure by Province in 2013**

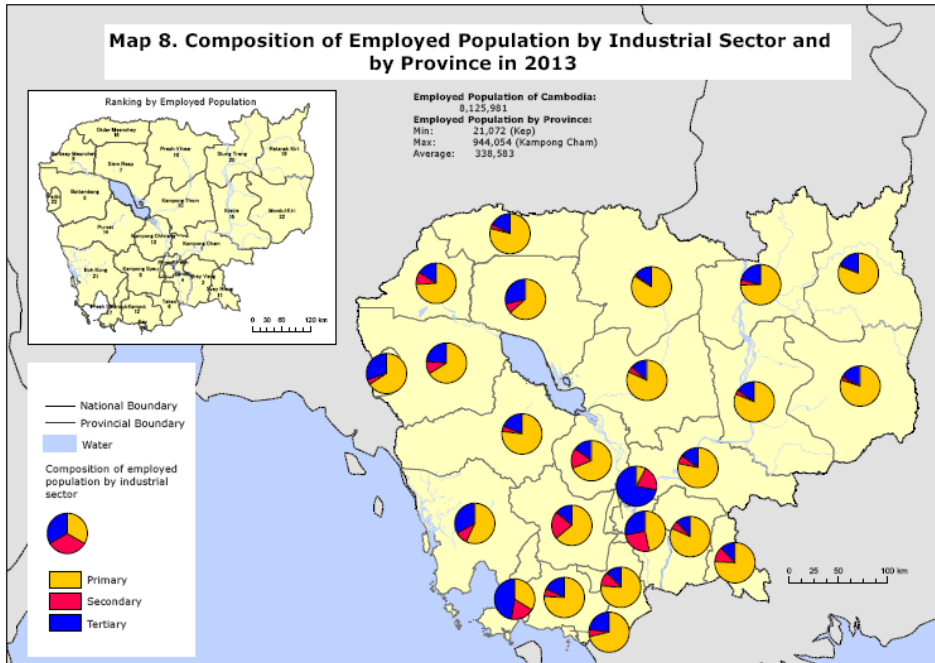


**Map 7. Labour Force Participation Rate by Province in 2013**

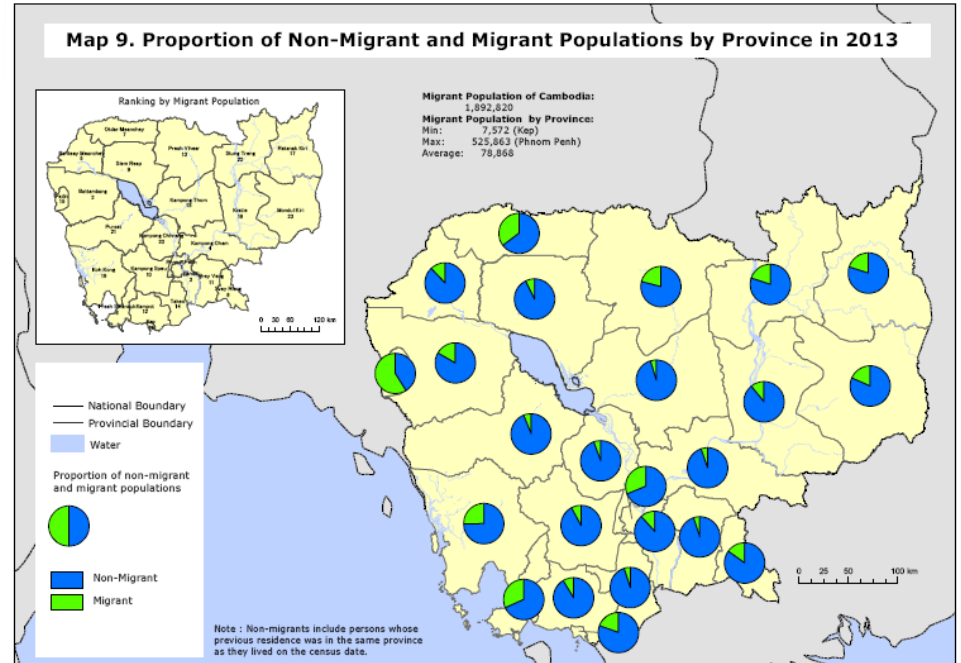




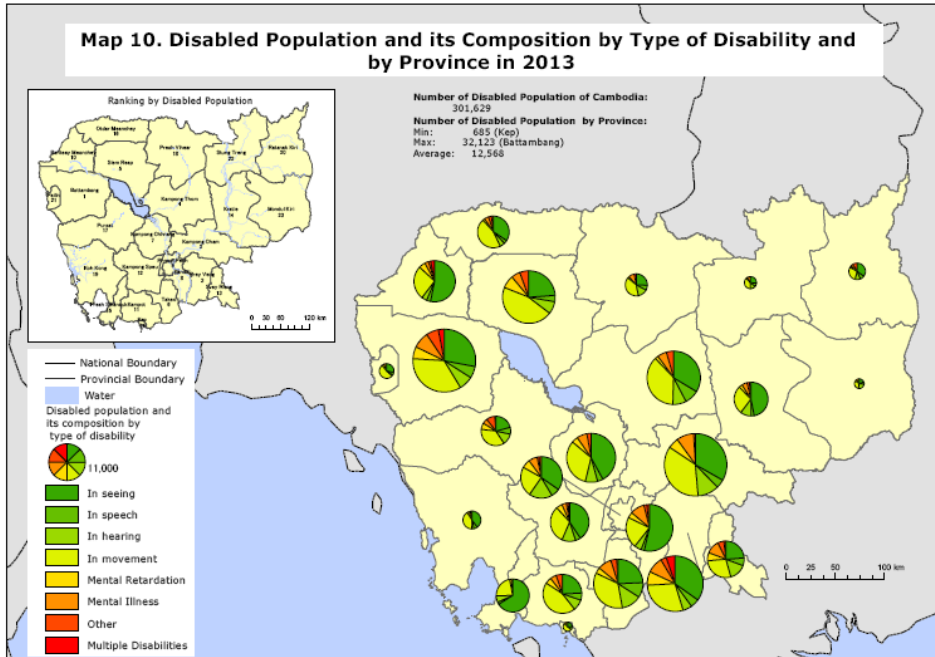
**Map 8. Composition of Employed Population by Industrial Sector and by Province in 2013**



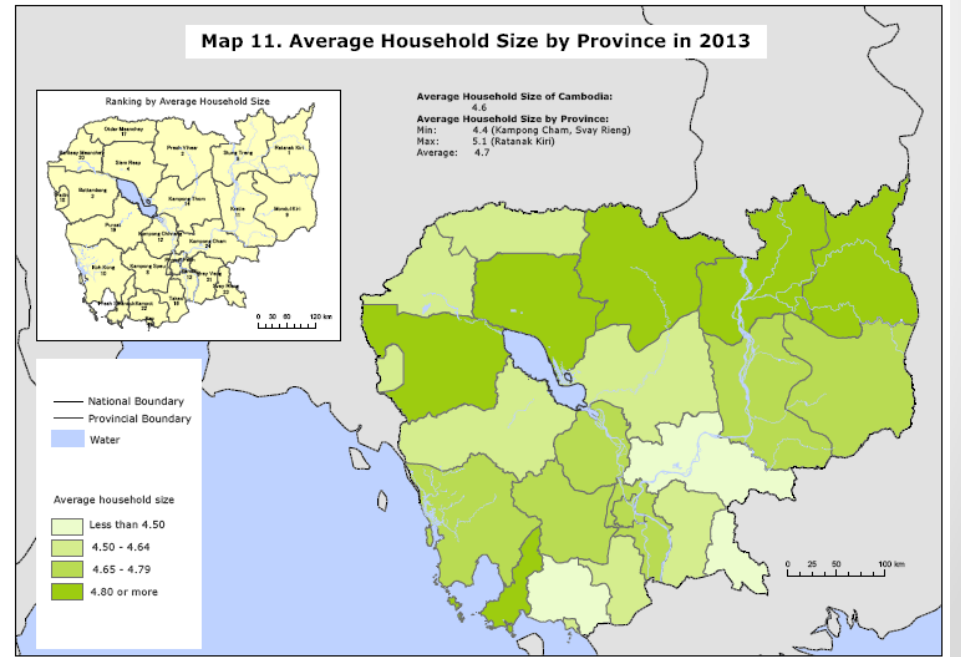
**Map 9. Proportion of Non-Migrant and Migrant Populations by Province in 2013**



**Map 10. Disabled Population and its Composition by Type of Disability and by Province in 2013**



**Map 11. Average Household Size by Province in 2013**



# Challenges

- GIS is rapidly become a popular tool to display the statistical information for support the decision making at all level.
- NIS has less technical skill regarding to the GIS
- NIS is only can produce the statics map, and we do need support from others development partners to help in technical to display the statistical information on geo-spatial.



Thank You!